

## Meets Diverse Needs

### Leakage Detection (Optional)

#### Main PCB

Leakage prevention algorithm contained.

#### Leakage Detection sensor

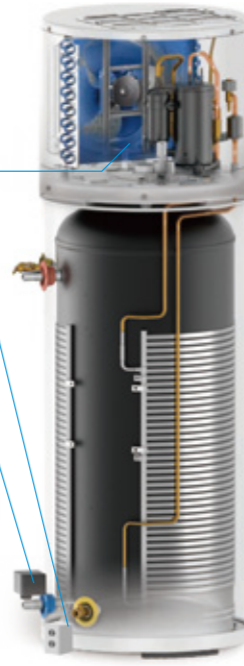
Fix at the bottom of the unit, detect if water is leaking.

#### Shut-off valve

Automatically close the water inlet valve when water leakage happens. Prevent your house from flooding, protect your carpet and floor.



Air duct adapter (Optional)



## Parameter SPECIFICATION SHEET

This specification sheet is based on the ductless version of the appliance.

	MAHW-50V/NSA	MAHW-65V/NSA	MAHW-80V/NSA		MCHW-50V/NSA	MCHW-65V/NSA	MCHW-80V/NSA		
Description	Model Number	MAHW-50V/NSA	MAHW-65V/NSA	MAHW-80V/NSA	Model Number	MCHW-50V/NSA	MCHW-65V/NSA	MCHW-80V/NSA	
	Normal Gallon Capacity	50	65	80	Normal Gallon Capacity	45	61	74	
	Rated Gallon Capacity	47	61	75	Rated Gallon Capacity	47	61	75	
	Voltage	208V/240V, 60Hz, 1Ph			208V/240V, 60Hz, 1Ph			208V/240V, 60Hz, 1Ph	
Energy Info	Water Outlet Temperature Range	109F-149F(43°C-65°C)			Water Outlet Temperature Range	109F-149F(43°C-65°C)			
	Uniform Energy Factor (UEF)	3.75	3.90	4.00	Uniform Energy Factor (UEF)	3.75	3.90	4.00	
	First Hour Rating (FHR)	69	80	91	First Hour Rating (FHR)	69	80	91	
	Element Wattage	4500W(240V)			Element Wattage	4500W(240V)			
	Compressor capacity	1500W			Compressor capacity	1500W			
	Total Unit Wattage (Input)	5500W			Total Unit Wattage (Input)	5500W			
	Cold Climate Efficiency(CCE)	3			Cold Climate Efficiency(CCE)	3			
	Recovery in G.P.H. 90° Rise	27.5			Recovery in G.P.H. 90° Rise	27.5			
	Heat pump ambient operating range	37 F-109 F(3°C-43°C)			Heat pump ambient operating range	37 F-109 F(3°C-43°C)			
	Heating element ambient operating range	51-115 F(15°C-46°C)			Heating element ambient operating range	51-115 F(15°C-46°C)			
Features	LED Screen	√			LED Screen	√			
	WiFi-Ready	x			WiFi-Ready	x			
	Built-in CTA-2045 Port	√			Built-in CTA-2045 Port	√			
	Leak Detection	Optional			Leak Detection	Optional			
	8" inlet&outlet air duct connection	Optional			8" inlet&outlet air duct connection	Optional			
	Operation Modes	5			Operation Modes	5			
	TIP valve installed	√			TIP valve installed	√			
	Min. Circuit Amps	23.6A(208V)/26.8A(240V)			Min. Circuit Amps	23.6A(208V)/26.8A(240V)			
	Electric Breaker Size	25A(208V)/30A(240V)			Electric Breaker Size	25A(208V)/30A(240V)			
	Replaceable Filter	√			Replaceable Filter	√			
Dimensions	Installation Clearance (Back)	0"			Installation Clearance (Back)	0"			
	Installation Clearance (side)	6"			Installation Clearance (side)	6"			
	Installation Clearance (top)	20"			Installation Clearance (top)	20"			
	Dry Fire Protection	√			Dry Fire Protection	√			
	Body Height	66.4/5 inch	65.6/7 inch	74.3/5 inch	Body Height	66.4/5 inch	65.6/7 inch	74.3/5 inch	
	Body Diameter	21.9/10 inch	25.7/10 inch	25.7/10 inch	Body Diameter	21.9/10 inch	25.7/10 inch	25.7/10 inch	
	Body Weight	218.26 lb	271.39 lb	293.22 lb	Body Weight	218.26 lb	271.39 lb	293.22 lb	
	Ship Length	28.7/10 inch * 27.3/5 inch	30.1/10 inch * 28.9/10 inch	30.3/10 inch * 29.1/10 inch	Ship Length	28.7/10 inch * 27.3/5 inch	30.1/10 inch * 28.9/10 inch	30.3/10 inch * 29.1/10 inch	
	Ship Height	75.1/5 inch	75.3/5 inch	83.2/5 inch	Ship Height	75.1/5 inch	75.3/5 inch	83.2/5 inch	
	Ship Weight	264.56 lb	334.2/9 lb	357.75 lb	Ship Weight	264.56 lb	334.2/9 lb	357.75 lb	
Certifications	Water Connection Size	Inlet Outlet		3/4inch 3/4inch	Water Connection Size	Inlet Outlet		3/4inch 3/4inch	
	Drainage Hose	3/4inch			Drainage Hose	3/4inch			
	UL 60335-1 & UL 60335-2-40	√			UL 60335-1 & UL 60335-2-40	√			
	UL 174	√			UL 174	√			
Sound	AHRI	√			AHRI	√			
	NEEA	Tier 4			NEEA	Tier 4			
	NSF/ANSI 372	√			NSF/ANSI 372	√			
	Energy Star	√			Energy Star	√			
Sound	NEEA test protocol			49.5dB(A)	Sound	NEEA test protocol			49.5dB(A)

\*Future Products in 2024



make yourself at home



www.mideacomfort.us



www.mideacomfortna.com



# Midea COMBO

## Heat Pump Water Heater

Up to 75% Energy Saving



## How Does It Work?

Uses air source heat transfer

Absorbs the Heat from the Surrounding Air

Transfers the Heat to the Water in the Tank



**4 Times** More Energy Efficiency Than Traditional Electric Water Heater

Traditional Electric Water Heater



Midea Heat Pump Water Heater



## So It Lowers Operating Costs

**Up to 75%**  
Annual Energy Savings

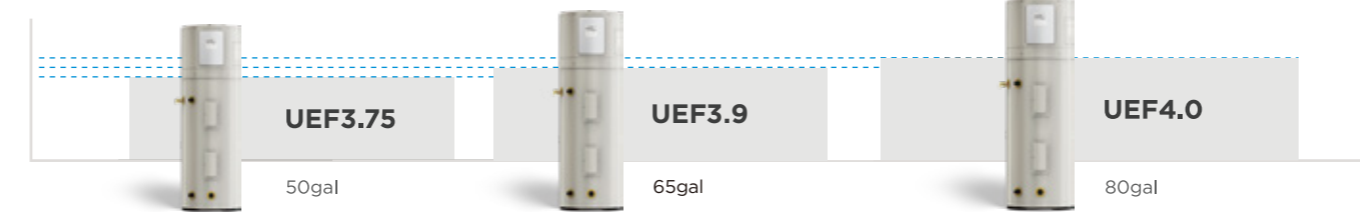
**\$700**  
Slash of Energy Bill

	Annual power consumption	Annual electricity bill
<b>Electric water heater</b>	6740 kWh	943.6\$
<b>Combo</b>	1685 kWh	235.9\$

\*Estimated value under specific installation conditions, electricity cost is calculated as US\$0.14/kWh

## Top Tier Energy Efficiency

Exceeds CEE Advanced Tier

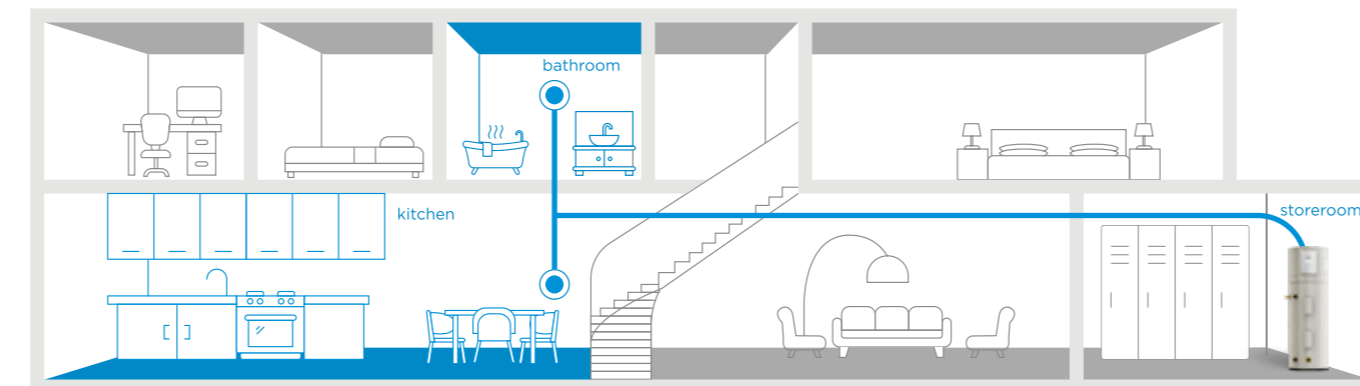


\*IRA highest rebate compliance: heat pump water heaters with UEF ≥ 3.3 for 240V models

## Eligible For Many Rebate Programs



## Easy Upgrade Solutions!



## Easy-to-install



## Universal Parts

Most key components are universal to 50 Gallon and 80 Gallon.

